

## Lifting Points

Steel, for Welding

### SPECIFICATION

**Steel German Material No. 1.6541**

- Forged
- High-tensile tempered
- 100 % electro magnetic tensile tested to EN 1677
- Phosphated

### INFORMATION

Lifting points GN 589 are intended for suspending lifting gear and lashing elements and are characterized by a particularly low profile. They are welded e.g. to load attachment points or directly onto the load itself and can absorb loads in any direction.

The nominal load capacity specified in the table is clearly marked on the lifting point. It applies to the least favorable load case of the listed load types.

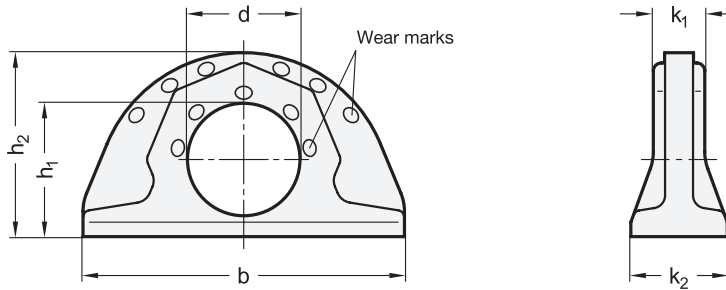
Lifting points GN 589 comply with Machinery Directive 2006 / 42 / EG.

### TECHNICAL INFORMATION

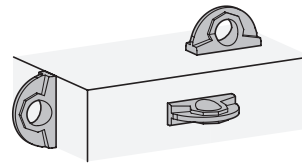
- Operating instruction GN 589 (see page )



**RUD**



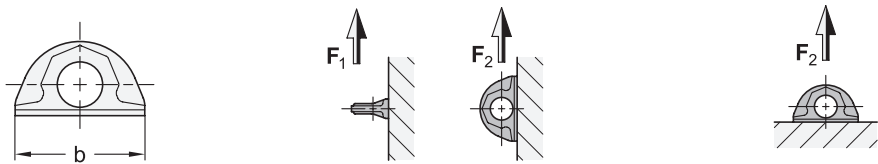
Application example



### GN 589

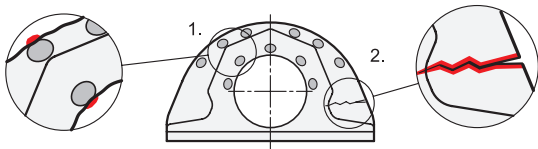
Description	b	d	h <sub>1</sub>	h <sub>2</sub>	k <sub>1</sub>	k <sub>2</sub>	Nominal load capacity in t (WLL)	Max. permitted lashing force in daN (LC)	⚖
GN 589-70	70	32	38	50	12	22	0.8	1600	200
GN 589-100	100	35	41.5	57	16	30	1.6	3200	435
GN 589-137	137	50	59	80	23	41	3.2	6400	1140
GN 589-172	172	60	71.5	99	27	51	5	10000	2160
GN 589-228	228	80	95	130	38	70	10	20000	5354

Load Capacity



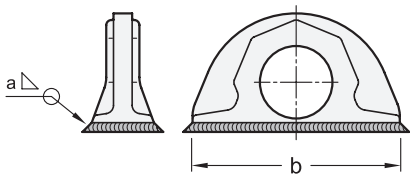
b	F <sub>1</sub> max. in t	F <sub>2</sub> max. in t
70	0.8	2
100	1.6	4
137	3.2	9
172	5	12
228	10	20

Discard maturity / Service life / Safety instructions



1. The wear marks can be used to check the wear of the lifting point. If these coincide with the outer contour or the contour of the bore, the end of the service life of the lifting point has been reached, which is also referred to as discard maturity.
2. If the lifting point is bent or has damage or cracks, it is no longer safe to continue using it and must therefore not be used.
- In either case, the lifting point must be replaced.

Fastening / Welding instructions



b	a Size fillet seam
70	3
100	4
137	6
172	7
228	8

Welding must be made by an approved welder in accordance with EN 287-1. The specified loading values are valid for an operating temperature of between -40 °C and +200 °C. Information on load capacity at higher temperatures is available upon request. The information in the operating instructions must be observed during installation, initial operation, and use. These are enclosed with the product or are provided digitally on the product page at [elesa-ganter.com](https://elesa-ganter.com).



Machine elements